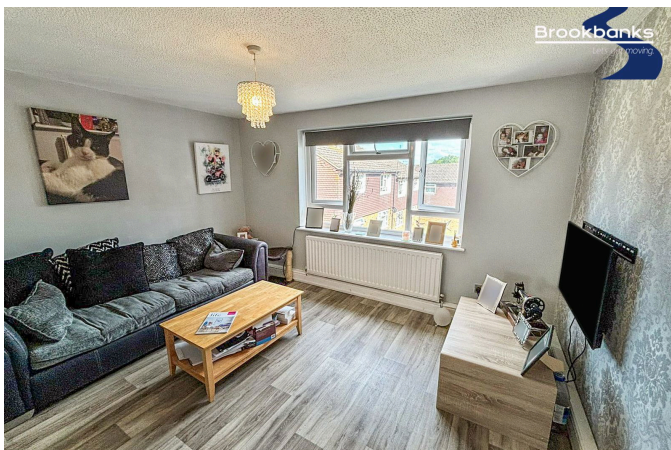
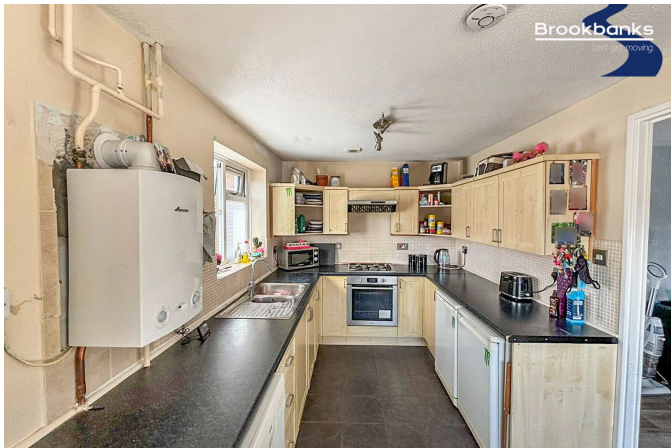


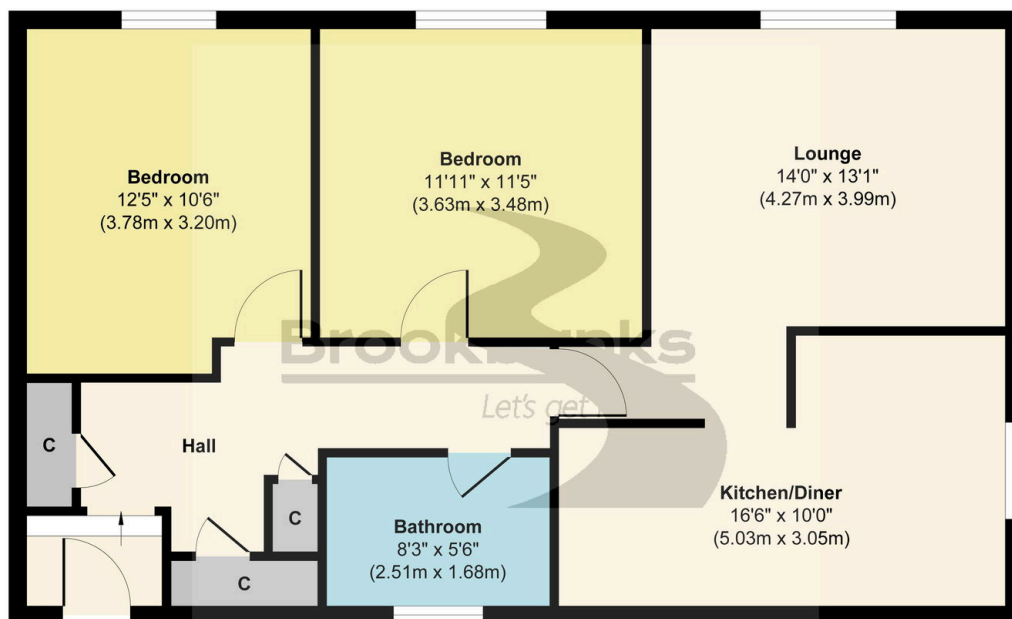
205 Lullingstone Avenue

£1

🛏️ 2 🚿 0 🚗 0



- Two double bedrooms with ample space and natural light
- Large living area perfect for relaxation and entertaining
- Modern family bathroom with quality fixtures
- Close proximity to the high street with shops, cafes, and amenities
- Access to well-maintained communal areas
- First-floor maisonette in a highly desirable location
- Generous kitchen-diner ideal for family meals or gatherings
- Ample storage throughout the property
- Short walk to the station for easy commuting
- Ideal for first-time buyers or investors looking for a solid return



Floor Plan

Approx. Gross Internal Floor Area 771 sq. ft / 71.62 sq. m

Illustration for identification purposes only, measurements are approximate, not to scale.
Produced by Elements Property

This spacious and well-presented two-bedroom first-floor maisonette is ideally situated in a sought-after location, just a short walk from the high street and station, offering convenience and great transport links. The property features two generous double bedrooms, a large living area perfect for relaxation and entertaining, and a well-proportioned kitchen-diner ideal for family meals or gatherings. A modern family bathroom adds to the practicality of this home. With ample storage throughout and access to communal areas, this property is an excellent

opportunity for first-time buyers or investors looking for a solid return. Don't miss out on this fantastic home!